



PANCRETE TECHNICAL TIP # 1



Properties & General Practical Uses for Pancrete

Testimonials

Properties

Pancrete is an chemically-engineered polymer with unique characteristics. The uniqueness of Pancrete is so special, it is manufactured under close supervision at our manufacturing plant in North Carolina.

Water Resistant

Pancrete is unaffected by water and aggressive cleaning chemicals. Because of this feature, it is commonly used to solve water intrusion problems, or just seal up and provide a permanent solution for old, leaking condensate pans in air conditioning systems and refrigeration units.

Chemically Resistant

Because many industrial surfaces are cleaned with aggressive chemicals and alkaline caustic materials, metals including zinc, copper, and aluminum corrode, and eventually dissolve. Pits and pinholes form in the metal, causing loss of use. No where is this as destructive as in air conditioning condensate drip pans. Replacement of condensate collection pans can cost the owner tens of thousands of dollars.

Pancrete is chemically resistant to attack from caustic cleaning agents. In fact, you could leave Pancrete submerged in a concentrated solution of coil cleaner for a year or more and not see any influence at all on Pancrete. This means that once Pancrete is applied to surfaces, they will no longer be influenced by chemical attack of conventional normally used cleaners.

“ I had a customer who was going to replace their 26 year old condensate pans. They had 30 units and it was going to cost them \$25,000 per unit and four days down time per unit.

We were able to Pancrete all of the pans at a fraction of the price with only one day down time. The customer is estactic.

Every time I've started a company with Pancrete, they've been so happy they end up doing every unit. This year I'm finishing up a six building office complex. We've done 100's of thousands of dollars in Pancrete projects in just a few years.”

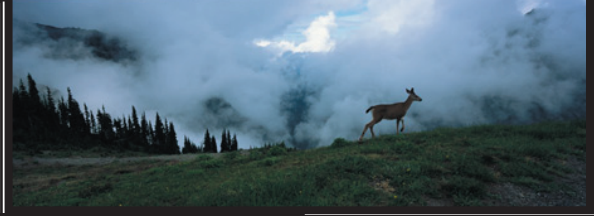
- CRT North Eastern Distributor.

Pan In^oA Can



PANCRETE

TECHNICAL TIP # 1



Properties & General Practical Uses for Pancrete

Testimonials

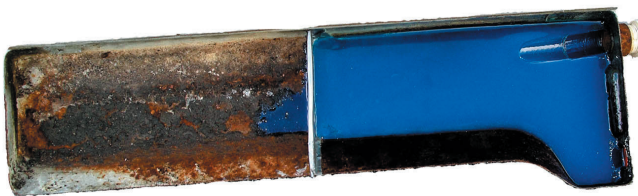
Prevents Stagnant Water

The EPA recommends against stagnant water in condensate collection pans. Condensate collection pans may have become unlevel during or after installation. Even slight differences in leveling is enough to cause water pooling, and areas that do not flow well to the drain.

When mixed, Pancrete is similar to the consistency of water. As such, it easily and quickly reaches all areas of the pan automatically. It self-levels the pan making it perfectly horizontal. The result? No dead spots that assist in stagnation.

Smooth Easily Cleanable Surface

Those desiring to clean condensate pans have problems. Rusting pans provide the perfect surface for adhesion of dirt and microbial growth. Trying to clean this type of a surface is difficult at best.



Pancrete addresses this important issue by providing a smooth surface, that is easily squeegeed and cleaned. There are no rough spots for deposits to grip onto. With Pancrete, cleaning of condensate pans, if necessary, is

done, in a matter of minutes.

Long Term Protection

Using Pancrete on surfaces provides long-term benefit. In fact, it has been stated: *“I finally had to replace the unit. About the only thing that was okay on it was the Pancrete!”*.

Many Pancrete users avoid problems by applying it to newer units a few years old. Why wait until you get leaks? Corroded pans often can sneak up on busy maintenance staff, and the problems they cause can be significant. Over the years, we have seen leaks into libraries, telephone equipment rooms, and computer rooms. While sometimes leaks can be just inconvenient, at other times they can represent tens of thousands in resulting costs.

“ Everything you claimed the product would do, it did and more.

I couldn't be more happy with the results and the time and money I saved.

We are initiating a program to seal all new pans and any pans pulled for maintenance.

Thank you for producing a product that does what its advertised to do and more.”

- HVAC
Supervisor
Independent School
District,
Mabank TX

Pan In^oA Can



PANCRETE

TECHNICAL TIP # 1



Properties & General Practical Uses for Pancrete

Testimonials

Fungistatic Agent

Pancrete contains a preservative that inhibits growth of mold/fungus on its surface. This is desirable for long term protection of the product itself.

Structural Integrity

Over years, pans get so rusted out they develop pinholes in the bottom. Not only do they leak, but a wrong step on the pan could just cause a bigger hole.

Pancrete can be applied in 1/4 inch thickness to the pan surface. This distributes weight more uniformly distributed over the surface so that the force on the weakened pan area is lessened. Old pans can not only be repaired for leaks, but also some structural integrity is imparted to the pan surfaces.

Long Term Repair

If for any reason Pancrete is in need of repair, a new surface can be poured at any time after the initial application. One day, one week, or even a year or more later, just clean the surface, and pour a thin film of Pancrete over the top of the previously poured Pancrete.

It seamlessly adheres and creates a new surface.

Ease of Use

As with any coating, the surfaces must be clean and free of rust and greases. This is the longest time involved in applying Pancrete. Once cleaned, Pancrete is mixed thoroughly, and can be poured in less than 20 minutes. There is no need to level or do anything else. Pancrete self-levels.

“I’ve found it to be far superior to any other product I have tried. It’s very easy to apply, sets up very quickly limiting downtime, it actually makes the unit look like new.

It cleans up well season after season, in fact I’m so pleased with the results I have put before and after pictures on my website.

As a member of NADCA, providing my customers a cost effective, quality solution, that can stand up to the harsh environments present, is a top priority, and Pancrete provides that solution.”

- Arizona Contractor



PANCRETE

TECHNICAL TIP # 1



Properties & General Practical Uses for Pancrete

Down Time

Replacing a condensate pan often creates not only tens of thousands in costs, but also creates down time for the unit. In the case of commercial buildings, extended downtime is unsatisfactory. It means that occupants will not have heat or air conditioning, and so must be moved - along with their desks, files, computers, etc. In short, this is a huge expense. Occupants don't like it, and neither do the property managers.

In one case at a commercial building in Texas, their problem was exactly that. The AC unit was on the 3rd floor, surrounded by occupants on all sides. Each had a desk by the window. The AC unit was enclosed in a room in the center of the floor.

The unit was about 15 years old, and the condensate pans had been leaking for over a year. They had to be replaced. The maintenance department was looking at a bill of \$30,000 to take down the wall surrounding the AC unit, remove the HVAC sidewalls, torch out the four coils, replace the pans, and then reverse the process. In addition to the expense, there was an estimated downtime of tens of days during which there would be no AC.

A CRT distributor happened to call on the maintenance director and found out about the upcoming material and labor expense and the expense and negative impact of moving the occupants

The engineer didn't want to spend the money nor did the management want to relocate the occupants.

The engineer purchased Pancrete and went in on a Saturday morning to clean the pans. On Sunday, he poured Pancrete. Twenty four hours later the unit was back in service with no interruption in the occupant work schedule.

Furthermore, he did the project for less than \$5,000 - a savings to the company of \$25,000 plus no equipment downtime. The owner and engineer couldn't be happier with the results.

Additional Help & Information

If you have purchase and supply questions, contact our customer service department at (800) 766-9057, Monday thru Friday from 9AM to 5PM.