

# Filtration Group



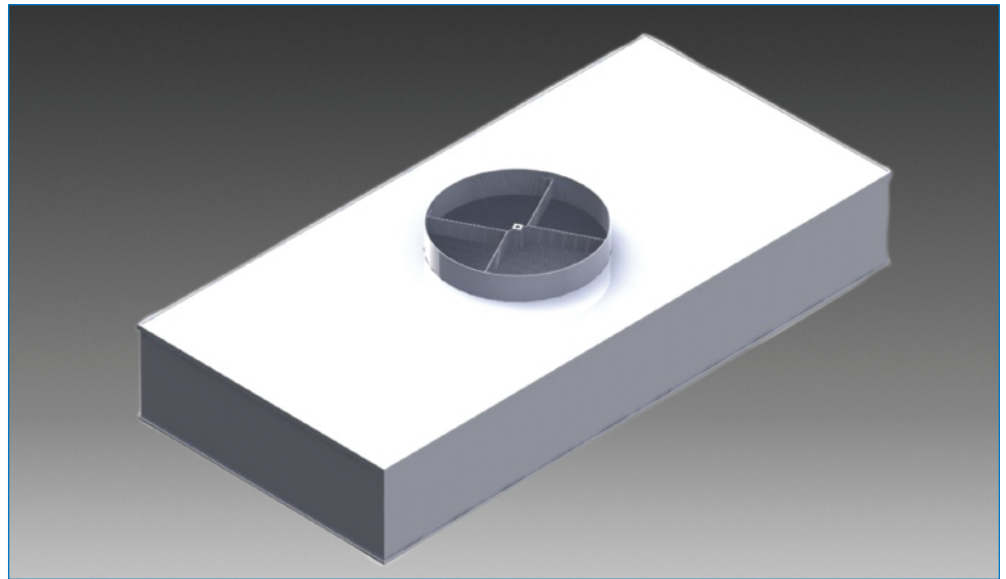
HVAC



## Clean Space Filtration

- 99.99% HEPA -  
99.9995% ULPA filtration  
2", 3" & 4" media pack  
configurations
- Extruded aluminum with  
clear anodized finish  
diffuser and filter
- Removable hinged  
perforated grille with  
1/4 turn fasteners and  
safety chain
- Filters tested and certified  
to IEST recommended  
practice for HEPA and  
ULPA Filters

## FLOWSTAR® CED - CRITICAL ENVIRONMENT DIFFUSER



### DESCRIPTION

The Flowstar CED is a room side serviceable diffuser with HEPA or ULPA gel seal filters. The unit is constructed of extruded aluminum with a clear anodized finish that is completely sealed at the factory with a two component polyurethane. The extrusion incorporates a filter alignment tab to position the filter on the integral knife edge during installation. Filters are retained with tabs on 1/2" studs that are held into the extrusion without penetrating the pressure boundary. Filter retention tabs are spring loaded and rotate 180 degrees to simply load and secure the filter without any tools.

Filters are gel seal and available in 99.99% at 0.3 micron up to 99.9995% at most penetrating particle size (MPPS). The filter media is a wet laid micro fiberglass that is precision pleated utilizing the Filtration Group Sentinel Pleat Technology.

### BENEFITS

- Cavity to seal mitered corners with polyurethane ensuring leak free assembly
- Filter Guide to properly position filter on knife edge
- Retention bolt installation does not penetrate pressure boundary

- Retention tab stop ensures filter will not bottom out on knife edge and keeps retention tab horizontal
- Retention tabs easily pivot for simple installation without the use of tools
- Thumb nut grooved for quick positioning of filter for a proper fit
- Flexibility in multiple screen materials and pack depths to meet application specific requirements
- Flowstar CED is an optimized unit relative to air flow characteristics, laminarity, pressure drop and ease of installation and certification at install.

### APPLICATIONS

The Flowstar CED Critical Environment Diffuser is designed and constructed to meet clean room cleanliness requirements for hospitals, pharmaceutical, biotechnology, research labs and similar environments.

# FLOWSTAR® CED - CRITICAL ENVIRONMENT DIFFUSER



## AIR FLOW RATE\*

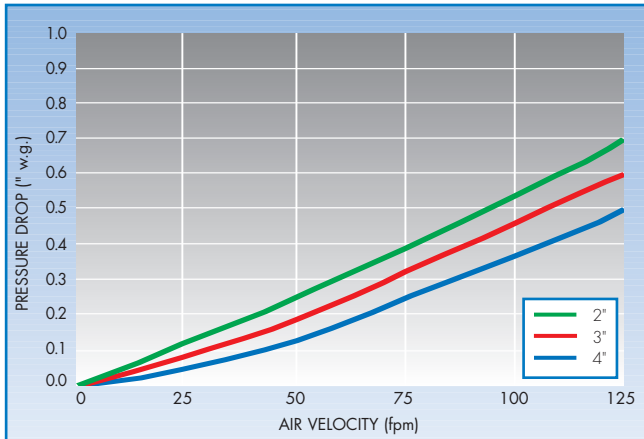
NOMINAL SIZE (INCHES)	40 FPM	65 FPM	90 FPM	120 FPM
24 X 24	94	153	212	283
24 X 36	158	257	356	474
24 X 48	221	359	498	664
24 X 60	285	463	641	854

\* Air Flow Rate based on effective filter face area (ft<sup>2</sup>) x velocity (fpm)

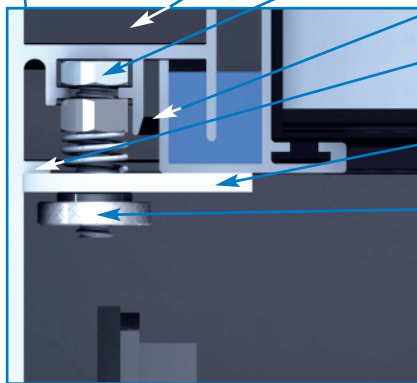
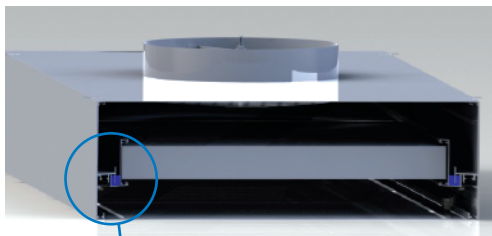
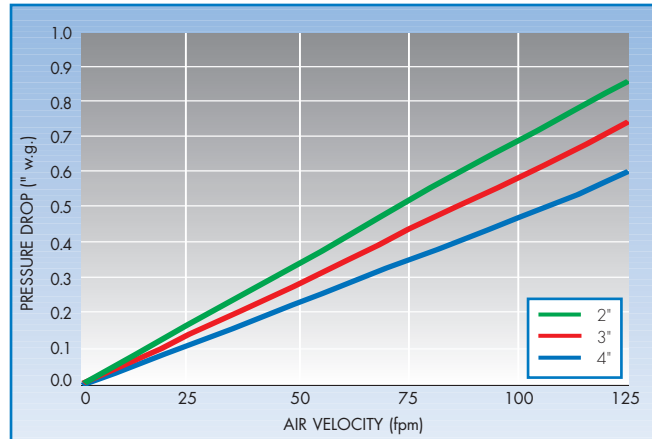
## AVAILABLE OPTIONS

- Split Butterfly Damper
- Fixed Flow Diffuser
- Slide Plate Damper
- Upstream Plenum Chamber
- Downstream Gasket
- 2" Foil Back Insulation
- Grille Materials
- Pack Depths

## HEPA, 99.99% EFFICIENCY – Based on 0.3 Micron



## ULPA, 99.9995% EFFICIENCY – Based on MPPS



- Cavity to seal mitered corners with polyurethane ensuring leak-free assembly
- Retention bolt installation does not penetrate pressure boundary
- Filter Guide to properly position filter on knife edge
- Retention tab stop ensures filter will not bottom out on knife edge and keeps retention tab horizontal
- Retention tab easily pivots for simple installation without the use of tools
- Thumb nut grooved for quick positioning of filter for a proper fit

Distributed by:



# Filtration Group

## HVAC

Phone: 877-FGTEAM (344-8326) ■ Fax: 800-518-1162  
 www.filtrationgroup.com ■ e-mail: aerostar@filtrationgroup.com

© FG 11/13

WHEN CLEAN AIR MATTERS  
 ISO 9001 Registered Company