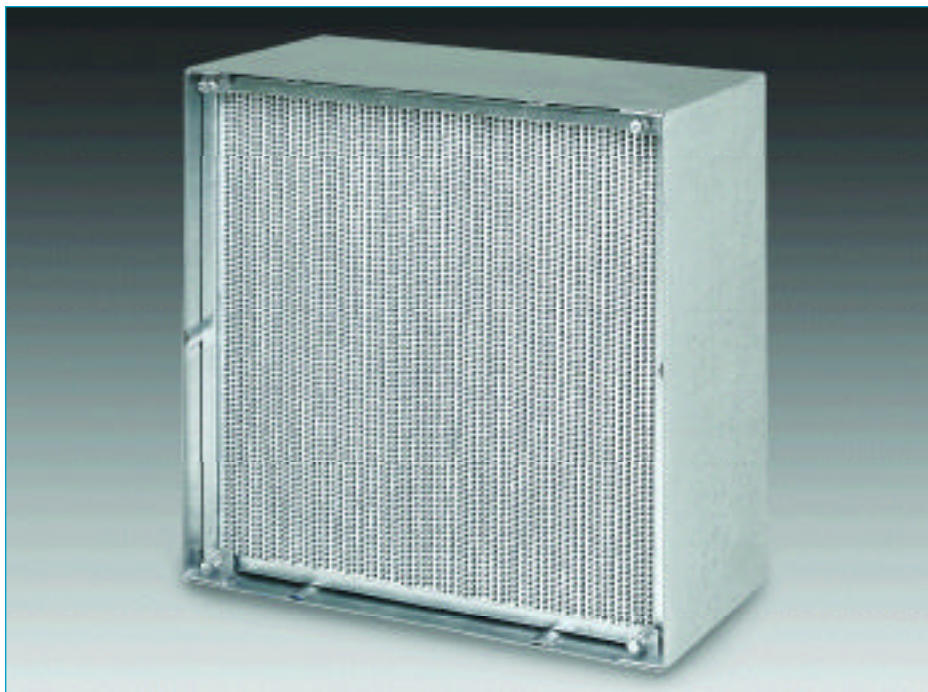


# FILTRATION GROUP

## HEPA SEAL FRAME



- Available in 16 gauge galvanized steel or 304L stainless steel
- Can be used individually or in multiple banks
- Designed for filters that use gasket or fluid seals
- Easy to assemble
- For 5 7/8" or 11 1/2" HEPA filters
- Can be used with pre-filter adapters



### DESCRIPTION

The Aerostar HEPA Seal Frame is a holding frame that can be used to hold individual filters, or for multiple banks holding a 5 7/8" or 11 1/2" HEPA filter. Each HEPA filter is being held in place with four heavy duty lock bolts. It can be combined with pre-filter adapters. The HEPA Seal Frame has pre-punched holes for easy assembly and proper alignment. Pop rivets or nuts/bolts are used to assemble frame and all sides should be caulked to prevent air by-pass. The frame is available for gasket or fluid seal applications. There are filter-guiding spacers inside the frame that will guide the filter into place, ensuring a leak free installation. The HEPA Seal Frame can be used for new installations or upgrades of existing systems. Constructed in 16-gauge galvanized steel, the framing system can be assembled in the field.

### BENEFITS

The versatility of the Aerostar HEPA Seal Frame makes it ideal for many applications. Installing filters are easy with the use of the lock bolt system. Several different configurations are available, making it ideal for the use with various duct sizes and capacity requirements.

### APPLICATIONS

The Aerostar HEPA Seal Frame can replace any existing filter framing system. It is designed for use with 5 7/8" or 11 1/2" filters with or without pre-filters. This housing can be used in any application where there is a need for air filtration such as schools, office buildings, hospitals and industrial applications.



# FILTRATION GROUP

HEPA SEAL FRAME

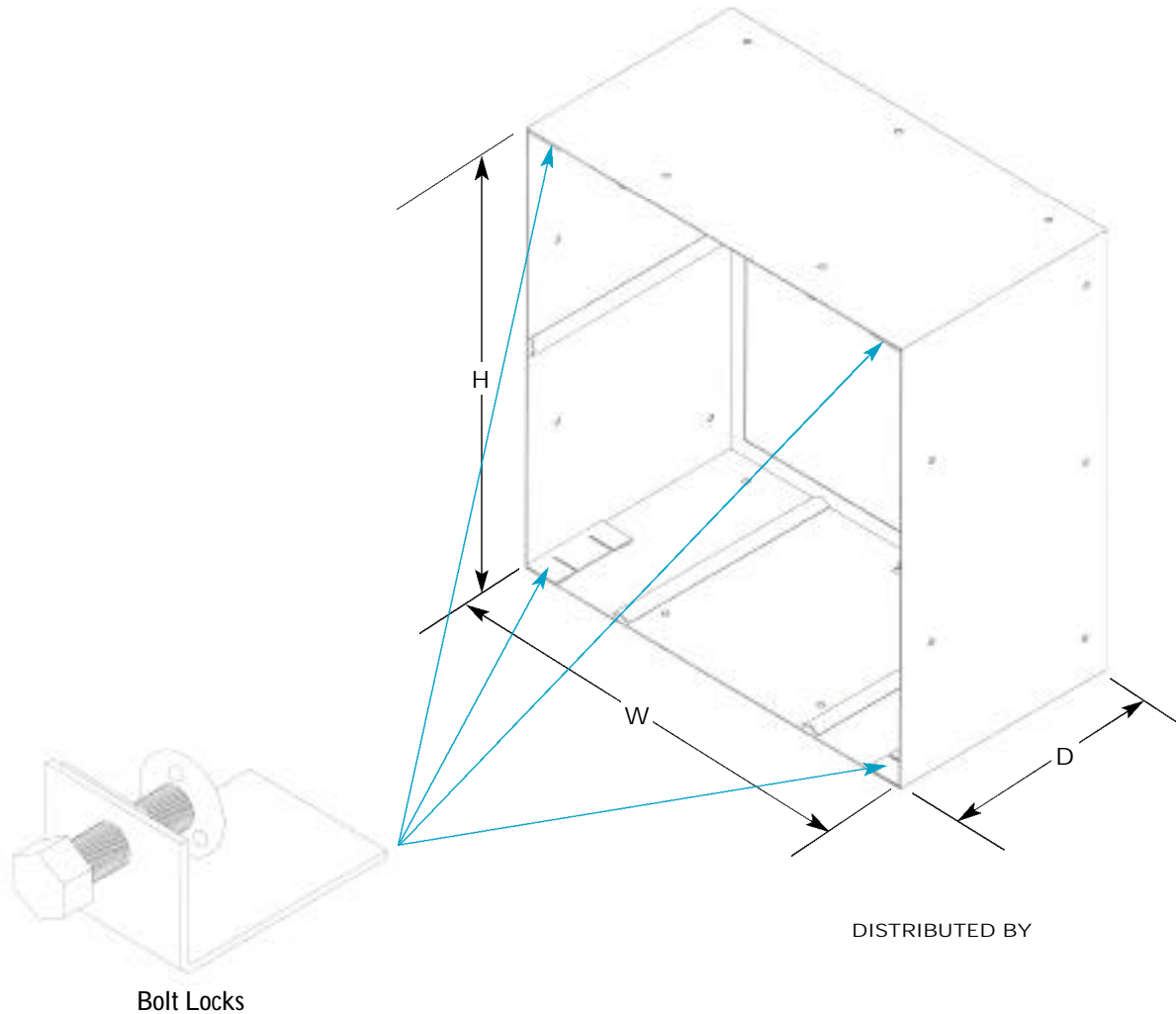
## ENGINEERING SPECIFICATIONS

The filter holding frames shall be Aerostar HEPA Seal Frame, manufactured by Filtration Group Inc. Holding frames shall be constructed in 16-gauge galvanized steel. For larger configurations vertical supports shall be used to add strength. Holding frames shall be pre-punched to assure proper alignment and easy assembly in the field.

All corners shall be continuous welded and ground smooth. Filters shall be held in place by 4 bolt locks per HEPA filter. There shall be filter-guiding spacers inside the frame that will guide the filter into place, ensuring a leak free installation. The frame shall allow for the use of pre-filter without disturbing the final filter. The housing shall be available for gasket or fluid seal applications.

## OPTIONS

- 304L stainless steel
- Gasket
- Fluid seal application



DISTRIBUTED BY

© FGI 07/03



# FILTRATION GROUP

**FILTRATION GROUP**  
Phone: 877-FGI-TEAM (344-8326)  
Fax: 800-518-1162  
www.filtrationgroup.com  
e-mail: aerostar@filtrationgroup.com

