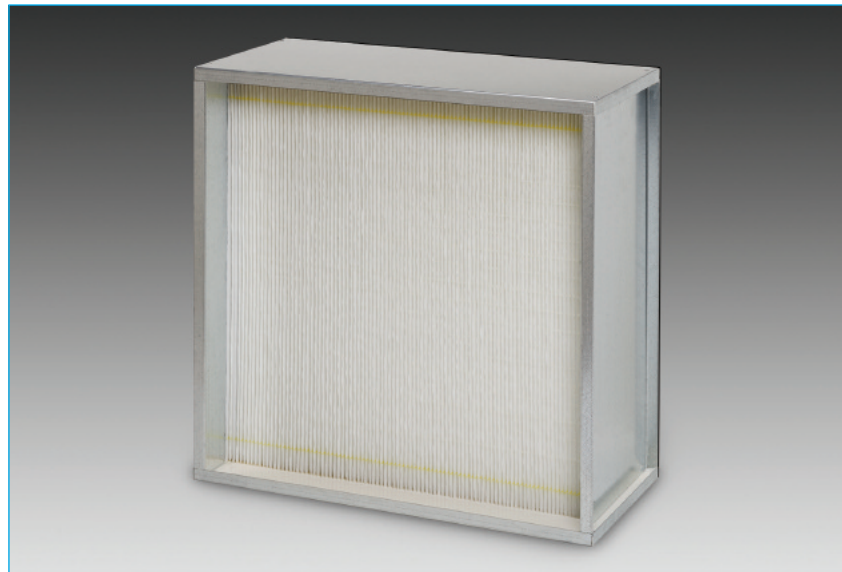


FILTRATION GROUP

M-SERIES HEPA & HEPA HC



- Standard and High Capacity styles available
- Advanced Mini-Pleat pack for optimum air flow
- Lightweight Design
- Recessed pack allowed for easily handling and installation
- Rugged 18 gauge galvanized steel frame
- Low pressure drop design lowers operating costs
- UL Class 2



DESCRIPTION

The M-Series HEPA and M-Series HEPA HC are designed for value, versatility, and performance. The M-Series is a HEPA (High Efficiency Particulate Air) filter constructed with an advanced mini-pleat pack and bead separators that eliminate the need for the traditional fluted aluminum separators. The advanced pleating structure is much more aerodynamic, reducing the pressure drop across the filter in both standard and high capacity models. The low initial pressure drop results in low operating costs during the life of the filter. The M-Series HEPA is a durable, lower in weight, and extremely cost competitive when compared to traditional HEPA filters.

The M-Series HEPA utilizes wet laid glass media, a robust 18 gauge galvanized metal frame, and is available in 99.97% and 99.99% efficiencies.

BENEFITS

Recessed pleat pack makes transportation and installation much easier than a

traditional HEPA filter, and further protects the pleat pack during shipping and handling.

Available in both Standard Capacity and High Capacity (HC) models.

Rugged steel frame to ensure integrity during the life of the filter, and will not swell like a wood sided HEPA in humid applications.

APPLICATIONS

The AeroStar® M-Series HEPA is designed to replace traditional standard capacity and high capacity HEPA filters and provide better air flow. Also, the M-Series HC model allows HVAC efficiency applications seeking HEPA filtration levels to upgrade without modification to equipment or systems. Applications include pharmaceutical, medical, food processing industries, contamination cleanup and hospitals. They can also be used as pre-filters in cleanroom environments and other critical applications for final HEPA and ULPA filters.



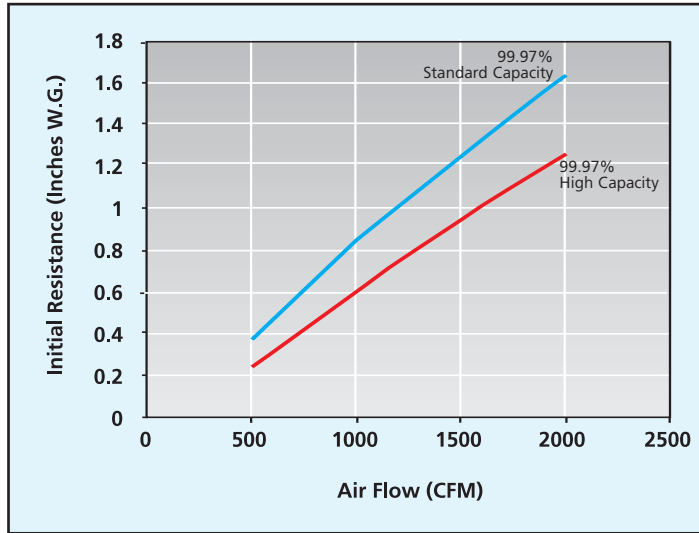
FILTRATION GROUP

M-SERIES HEPA & HEPA HC

DIMENSIONS AND PERFORMANCE DATA

99.97% DOP STANDARD CAPACITY .85" avg IR at 250 fpm			
PART NUMBER	ACTUAL SIZE (H x W x D)	RATED AIR FLOW (cfm)	SHIPPING WEIGHT (lbs)
41902	23 ³ / ₈ x 11 ³ / ₈ x 11 ¹ / ₂	500	18
41901	23 ³ / ₈ x 23 ³ / ₈ x 11 ¹ / ₂	1000	34
41900	24 x 12 x 11 ¹ / ₂	500	18
41638	24 x 24 x 11 ¹ / ₂	1000	34
99.97% DOP HIGH CAPACITY 1.25" avg IR at 500 fpm			
PART NUMBER	ACTUAL SIZE (H x W x D)	RATED AIR FLOW (cfm)	SHIPPING WEIGHT (lbs)
41902HC	23 ³ / ₈ x 11 ³ / ₈ x 11 ¹ / ₂	500	18
41901HC	23 ³ / ₈ x 23 ³ / ₈ x 11 ¹ / ₂	2000	34
41900HC	24 x 12 x 11 ¹ / ₂	500	18
41638HC	24 x 24 x 11 ¹ / ₂	2000	34

M-SERIES HEPA FLOW CURVES



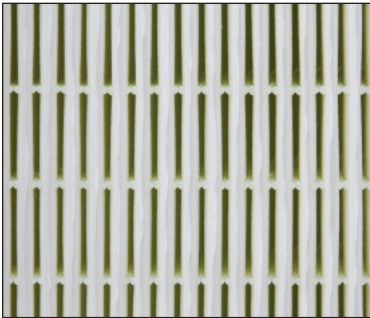
* Contact Customer Service at 1. 800. 739. 4600 for additional sizes and information.

APPLICATION PARAMETERS

Maximum Constant Temperature:	212° F (100° C)
Recommended Final Pressure Drop:	2.0 "w.g.
Flammability:	UL Class 2
Relative Humidity:	100%

MATERIALS

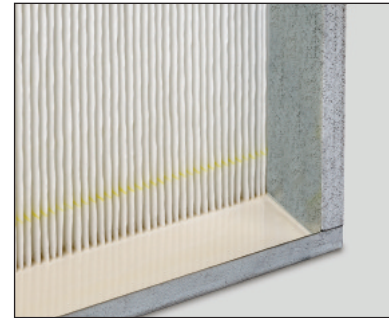
Frames:	18 gauge galvanized steel
Media:	Wet laid microglass paper
Separators:	Hot melt
Sealant:	Polyurethane
Gasketing:	HD-foam urethane 1/4" x 5/8" wide, ball-in-socket. Joints are filled with flexible sealant to ensure proper seal.



Precision machine pleating provides optimal air flow.



Recessed pleat pack eases transportation and installation.



The M-Series is fully potted to prevent any chance of contaminant by-pass



Each filter is individually tested and labeled with a unique serial number, efficiency, part number and rated CFM to ensure true HEPA efficiency performance.

DISTRIBUTED BY

© FGI 10/06



FILTRATION GROUP

FILTRATION GROUP
 Phone: 877-FGI-TEAM (344-8326)
 Fax: 800-518-1162
 www.filtrationgroup.com
 e-mail: aerostar@filtrationgroup.com

